

Complete Success Begins with Sample Quality Control

Agilent 4150 and 4200 TapeStation Systems

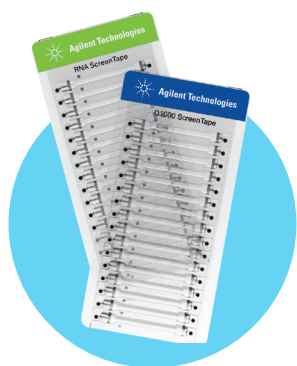




Complete Success Begins with Sample Quality Control

Agilent TapeStation systems are automated electrophoresis solutions for quality control (QC) of DNA and RNA samples. The TapeStation systems are all-in-one platforms, which include instrumentation, data processing software, reagents, and ScreenTape devices for analysis of sample size, quantity, and integrity. Delivering highly accurate and precise analytical evaluation, the systems fit perfectly into next-generation sequencing (NGS) or biobank workflows for low to high sample throughput.

Sample QC has never been so fast and easy – simply load the TapeStation instrument with your prepared samples and ScreenTape device, start the run, and review the results within 1 to 2 minutes per sample.



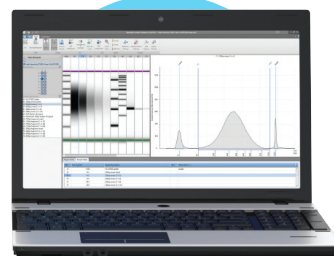
Step 1

Select ScreenTape assay and prepare samples



Step 2

Place samples and ScreenTape devices in TapeStation instrument



Step 3

Press start and review results in TapeStation software

Complete Solutions for End-to-End Sample QC

Agilent TapeStation systems combine automated walk-away sample processing with operational simplicity. The instruments offer constant cost-per-sample in combination with high application flexibility. Ready-to-use consumables ensure straightforward operation with minimum

hands-on time. Reliable results are generated within 1 to 2 minutes per sample. Valuable sample is saved as not more than 2 μL is required. Select a system based on your lab's requirements for sample throughput. The 4200 TapeStation system offers complete scalability from 1 to 96 samples.

Sample loading from two 8-tube strips or a 96-well plate

Complete scalability: Analyze any sample number from 1 to 96 samples

Reliable, reproducible results within less than 90 minutes for 96 samples



4200 TapeStation system

For labs handling smaller numbers of samples, the 4150 TapeStation system for 1 to 16 samples is the affordable, entry-level alternative. Complete assay compatibility guarantees seamless switching between systems.

Both TapeStation instruments support self-maintenance tasks and thus enable an optimized cost of ownership.

Sample loading from two 8-tube strips

Complete scalability: Analyze any sample number from 1 to 16 samples

Reliable, reproducible results within less than 20 minutes for 16 samples

Small footprint saves precious bench space in your laboratory

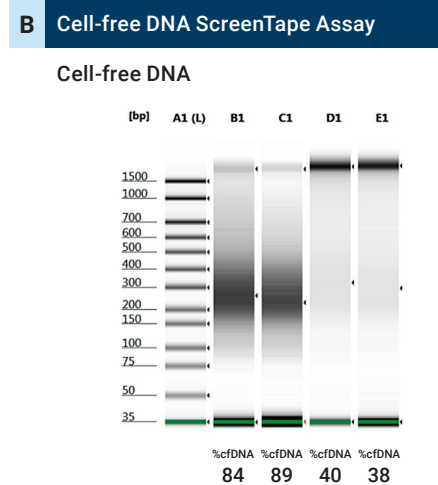
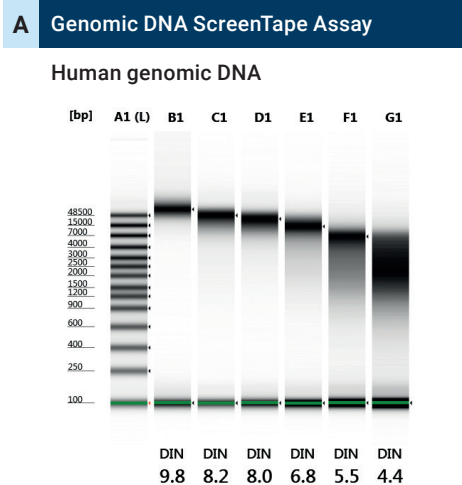


4150 TapeStation system

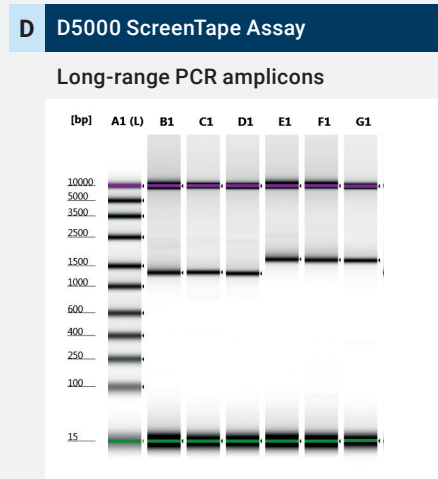
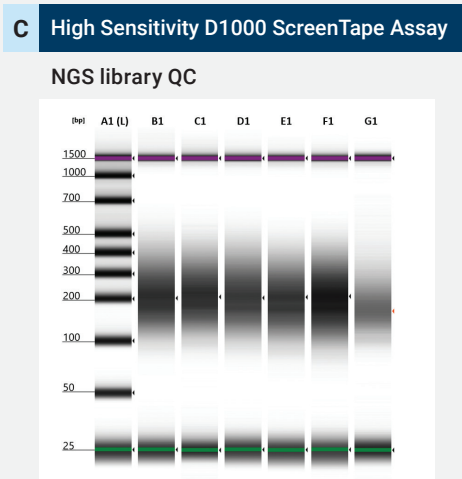
Full Range of DNA and RNA QC Applications

Agilent DNA ScreenTape assays can be used at several QC steps in next generation sequencing (NGS) workflows. For example, QC of genomic DNA (gDNA) including DNA Integrity Number, DIN, (A), QC of cell-free DNA with %cfDNA (B), NGS library QC (C), and analysis of amplified libraries. Additional applications include PCR and multiplex PCR fragment analysis (D) as well as QC of quantitative PCR products. The DIN allows the assessment of input gDNA integrity from multiple sources, including FFPE tissue.

Sample input QC of extracted genomic DNA and cell-free DNA by using the DNA integrity number (DIN) and the %cfDNA, respectively.

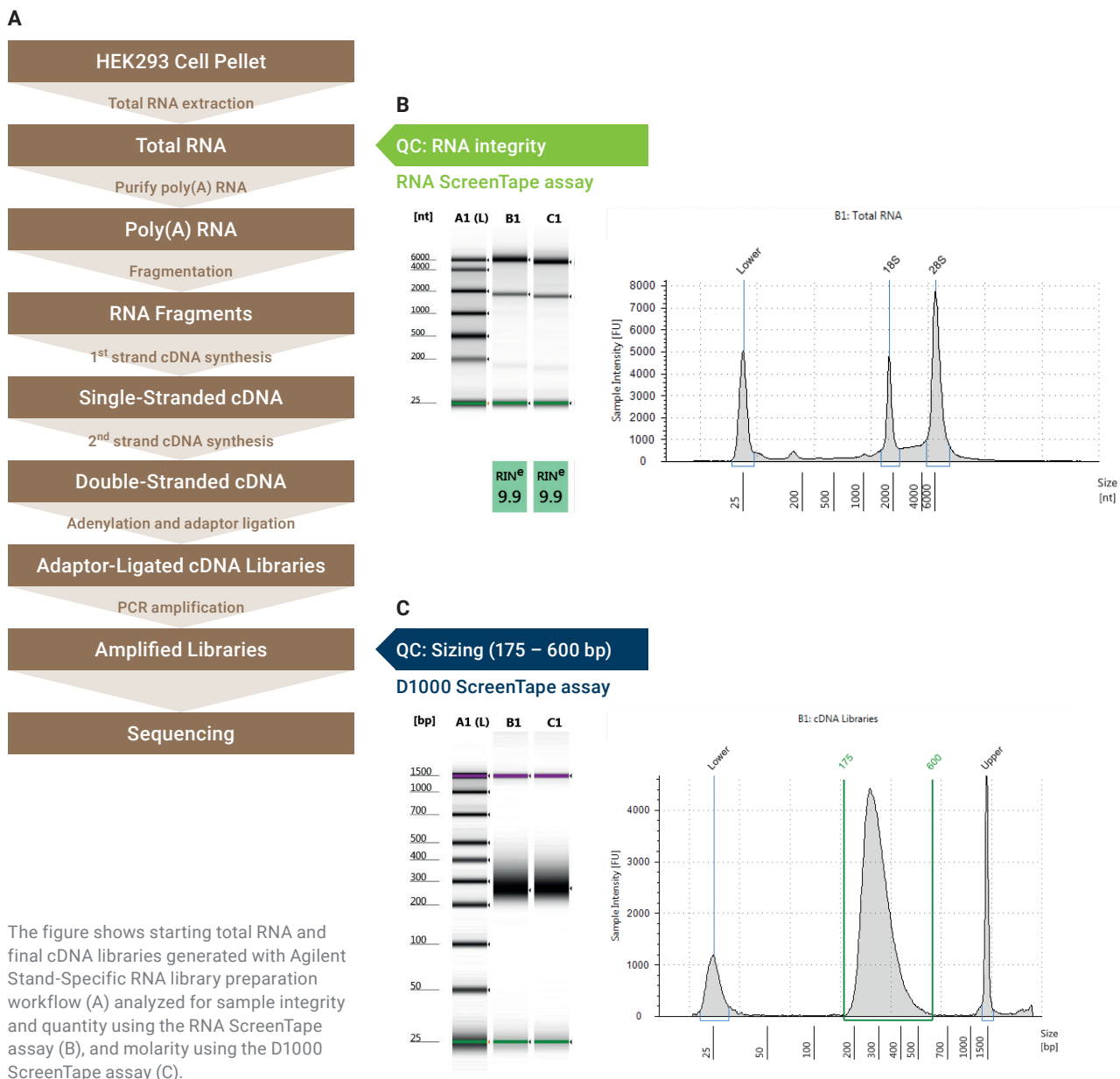


QC in downstream applications such as next generation sequencing.



Genomic DNA smears at different degradation stages (A), cfDNA samples with different amounts of gDNA communication (B), NGS library QC (C), and long-range PCR fragments (D).

Agilent RNA ScreenTape assays are used for the determination of quality and quantity of total RNA samples from eukaryote or prokaryote origin. The RNA integrity number equivalent (RIN[®]) provides a user-independent integrity score for total RNA.

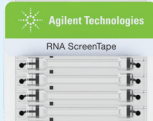
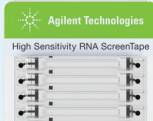
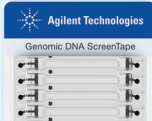
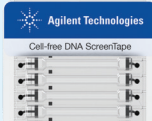


ScreenTape Assays Cover the Full Range of DNA and RNA QC Applications

The credit card-sized, ready-to-use ScreenTape device carries multiple lanes for separating DNA and RNA samples. Each ScreenTape device has 16 lanes so that each sample is analyzed in an individual lane without any risk of cross-contamination. Partially used ScreenTape devices can be used for further analysis, providing constant cost-per-sample.

Complete analytical sensitivity range

Select from a complete ScreenTape assay portfolio for DNA or RNA analysis based on your application and sensitivity requirements.

	RNA QC			
	RNA assay	High Sensitivity RNA assay	Genomic DNA assay	Cell-free DNA assay
				
Sizing range	100–6000 nt	100–6000 nt	200–60000 bp	50–800 bp
Quantitative range	25–500 ng/μL	500–10000 pg/μL	10–100 ng/μL	100–4000 pg/μL
Sample volume needed	1 μL	2 μL	1 μL	2 μL
Limit of detection	5 ng/μL	100 pg/μL	0.5 ng/μL	20 pg/μL
Integrity assessment	RNA integrity number equivalent (RIN [®])	RNA integrity number equivalent (RIN [®])	DNA Integrity Number (DIN)	%cfDNA

Barcode

Automated assay detection

D1000 ScreenTape
EXP: 13 Dec 2015
ID: 01-5029-150616-03-000024

ScreenTape details

At-a-glance expiry date

Buffer chamber

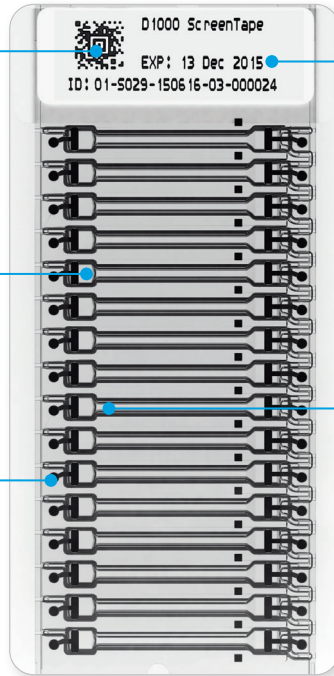
Automatic sample loading

Electrodes

Individual sample separation

Individual sample lanes

Zero carry-over



DNA QC

D1000 assay



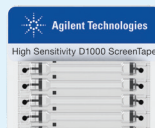
35–1000 bp

0.1–50 ng/μL

1 μL

0.1 ng/μL

High Sensitivity D1000 assay



35–1000 bp

10–1000 pg/μL

2 μL

5 pg/μL

D5000 assay



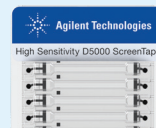
100–5000 bp

0.1–50 ng/μL

1 μL

0.1 ng/μL

High Sensitivity D5000 assay



100–5000 bp

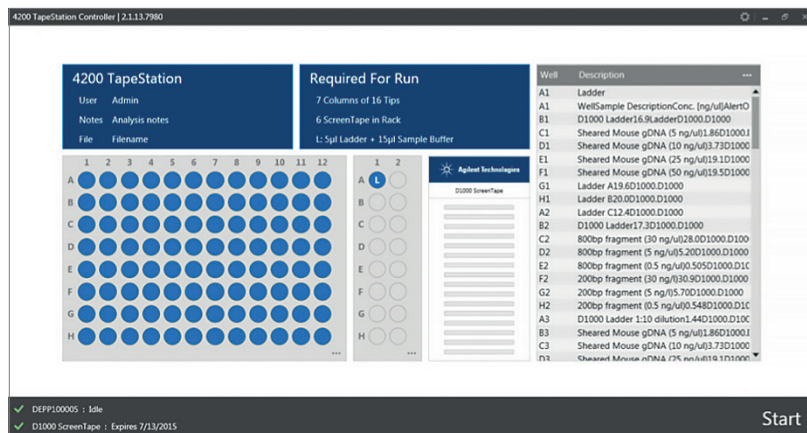
10–1000 pg/μL

2 μL

5 pg/μL

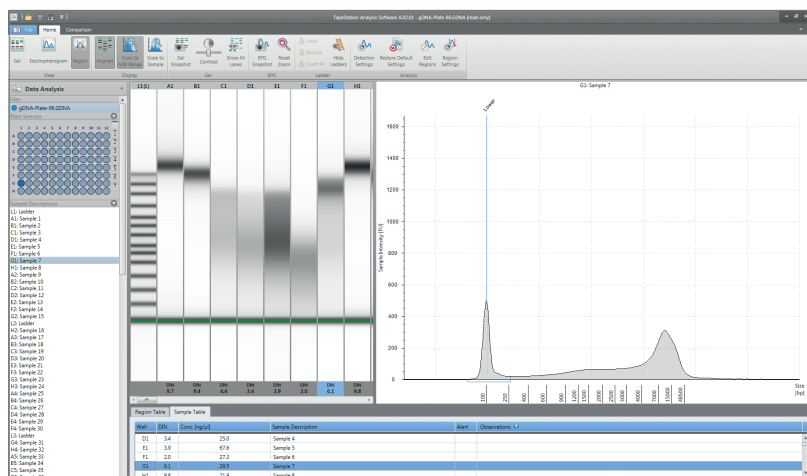
Streamlined Operation Including Software, Services, and Support

Streamline instrument control as well as data analysis and reporting with TapeStation software. Results can be displayed as an electropherogram, as familiar gel image, or in tabular format for effortless sample comparison. The software automatically determines sample size, quantity and molarity. In addition, for genomic DNA, the DNA integrity number (DIN) and for total RNA the RNA Integrity number (RIN^e) are calculated. Reports can be generated intuitively and saved in PDF format, or exported for editing in Microsoft Word or Excel.



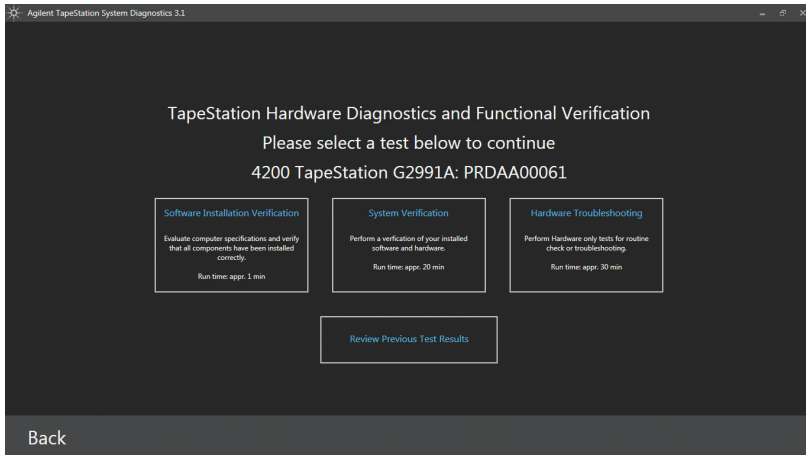
4200 TapeStation Controller Software

- Automated assay selection through ScreenTape barcode
- Intuitive and flexible sample selection
- Highlighting of required consumables and reagents for the run



TapeStation Analysis Software

- Easy navigation through sample results
- Customizable results presentation
- Reporting and export in various formats



Maximize uptime through diagnostic tools

Achieve highest productivity and lowest total cost of ownership through advanced system diagnostics. Using a dedicated reusable TapeStation test tape it is possible to perform hardware diagnostics and functional verification tests embedded in the TapeStation controller software.

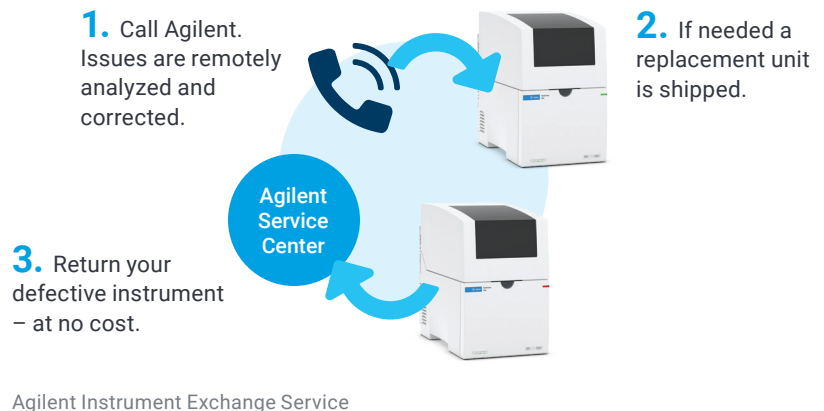


Get peace of mind through comprehensive instrument and assay familiarization

Agilent offers a startup service to familiarize you with the instrument and software, as well as an assay of your choice. This service is delivered onsite and gets you into analyzing your own samples – fast.

Additional Support Services

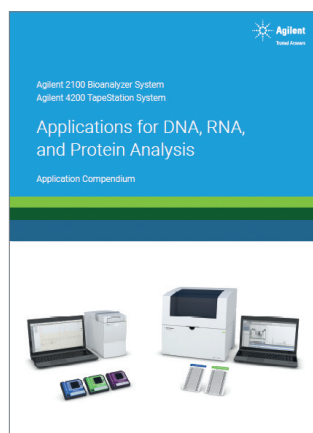
One-year standard warranty is included in both TapeStation systems. This may be upgraded to CrossLab Silver level and extended to cover up to five years total warranty time. This premium service includes instrument exchange or return for repair, and an annual system preventive maintenance service. Choose from additional service options e.g. compliance services (IQ/OQ) to suit your lab's specific service-level needs.



Applications for DNA, RNA, and Protein Analysis

You find more details on key applications using the Agilent 2100 Bioanalyzer and TapeStation systems in an application compendium. From next generation sequencing, genomic DNA, RNA, genome editing to protein analyses, this compilation of applications will help you accelerate discovery and support your research.

Download a copy by searching for publication number 5991-8974EN on agilent.com.



Learn more:

www.agilent.com/genomics/tapestation

Buy online:

www.agilent.com/chem/store

Find an Agilent customer center in your country:

www.agilent.com/chem/contactus

U.S. and Canada

1-800-227-9770

agilent_inquiries@agilent.com

Europe

info_agilent@agilent.com

Asia Pacific

inquiry_lsca@agilent.com

For Research Use Only. Not for use in diagnostic procedures.
PR7000-7637

This information is subject to change without notice.

© Agilent Technologies, Inc. 2021
Published in the USA, January 1, 2021
5994-0060EN